

We will show you!



Schmierer®





We will show you!

Schmierer[®]

High-Tech with History

The story of Schmierer GmbH has a very long tradition. Anna + Eugen Schmierer founded the company in Frankfurt/Main in the year 1932; first starting with a repair shop for measuring instruments. During World War II, the company had been destroyed twice. After the rebuilt, the company started again with three workers for both repair jobs and also developing and producing an own line of pressure and temperature gauges.

On January 01, 1960 the son Walter Schmierer took over the management of the company. In 1965, the company moved its headquarter to Gross-Gerau, approx. 25 kilometers south of Frankfurt. The new premises had become necessary, as the old workshop turned out to be too small for the increasing development of the product portfolio. From 2002 on, the company is managed by Ralf Schmierer.

Today, 20 employees of Schmierer GmbH are producing in Germany a wide range of pressure and temperature gauges with modern machin-

ery, assembling and testing equipment. A very important part of our portfolio are custom-made solutions. Meanwhile, we are supplying the world from our production plants in Germany and Iran and submit local support for repair, calibration and filling-station for seals in South East Asia with the newly formed Schmierer S.E.A. in Malaysia.

We are proud to supply many internationally active customers from the chemical and petrochemical industry, foodstuff industry, large construction companies and other partners in the industrial world.

Quality has always played a major role within the Schmierer GmbH history. We are able to manufacture and produce with the most modern CNC- and NC-machines for turning, milling and drilling. Schmierer GmbH only uses approved and certified raw material. Modern production and assembling units at a very high level guarantee the reliability of our instruments. We are certified according to DIN ISO 9001.





Our whole range of products supports a various number of applications in the modern machinery- and plant construction. We produce for the sector "Pressure Measurement" all kinds of Bourdon Tube-, Diaphragm-, Capsule-, Test- and Differential pressure gauges.

Quality, durability and precision are the key factors for development and production of our instruments. Our specialization and our own demand guarantee pressure – and temperature gauges on the highest level in both, production and maintenance of your products.





We will show you!

Schmierer[®]



BOURDON TUBE GAUGES

☑-Bourdon tube gauges are produced with wetted parts in brass or stainless steel; Cases from 40 mm to 250 mm are available in stainless steel. Other connections and higher pressure ranges on request.

Ranges: 0–0.6 bar to 0–1000 bar

Case sizes: 40 mm Ø–1000 mm Ø

Standard Connection: 1/8" BSP, 1/4" BSP and 1/2" BSP

DIAPHRAGM GAUGES

☑-Diaphragm gauges are produced completely in stainless steel. Diaphragm and connection can be made of special material and/or coated/ lined for protection.

☑-Absolute pressure gauge are produced completely in stainless steel.

Other connections on request.

Ranges: 0–0,6 bar to 0–25 bar

0–16 mbar to 0–400 mbar

Case sizes: 100 mm Ø–250 mm Ø

Standard Connection: 1/2" BSP

CAPSULE GAUGES

☑-Capsule gauges are produced with wetted parts in brass or stainless steel; all cases are standard in stainless steel.

Other connections on request.

Ranges: 0–4 mbar to 0–400 mbar

Case sizes: 63 mm Ø–160 mm Ø

Standard Connection: 1/4" BSP and 1/2" BSP

TEST GAUGES

☑-Test gauges are produced with wetted parts in brass or stainless steel. Available accuracy classes are 0.6% and 0.25%.

Other connections and higher pressure ranges on request.

Ranges: 0–0.6 bar to 0–1000 bar

Case sizes: 160 mm Ø and 250 mm Ø

Standard Connection: ½" BSP



DIFFERENTIAL PRESSURE GAUGES

☑-Differential gauges are produced completely in stainless steel.

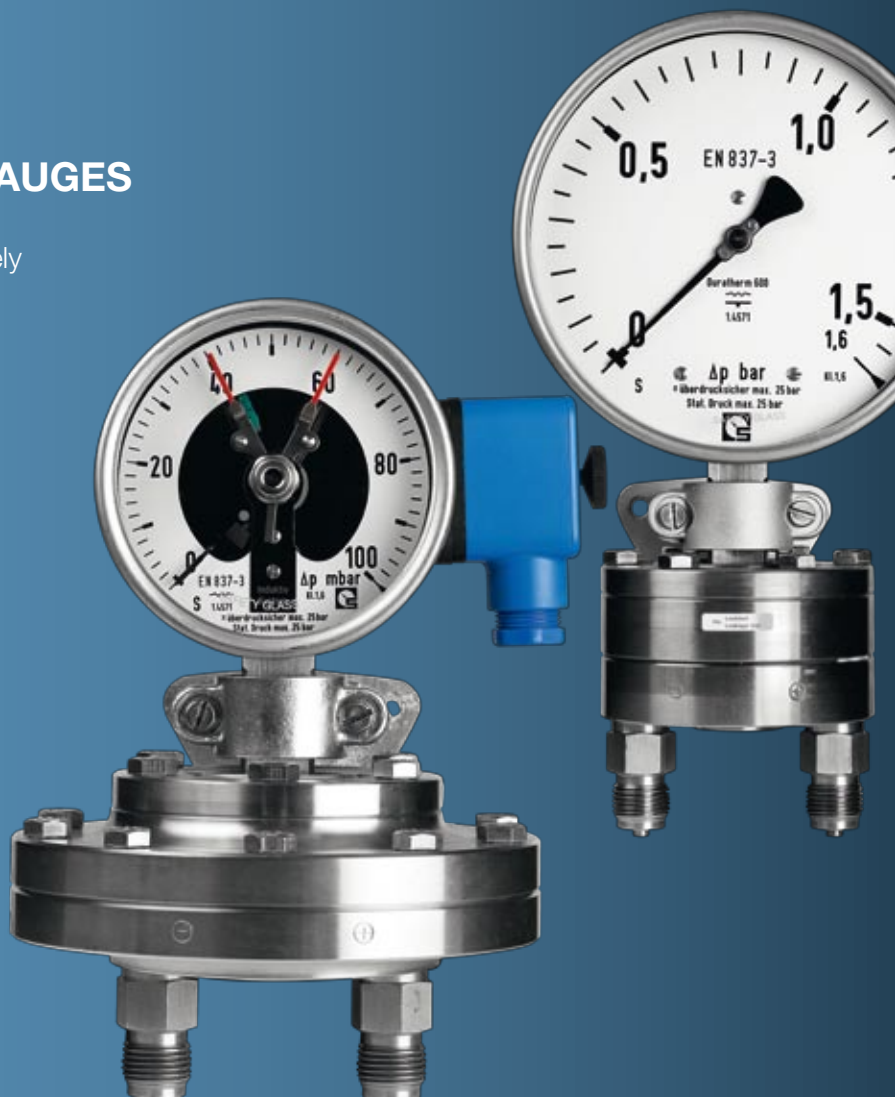
Other connections on request.

Ranges: 0–0.6 bar to 0–25 bar

0–40 mbar to 0–400 mbar

Case sizes: 100 mm Ø and 160 mm Ø

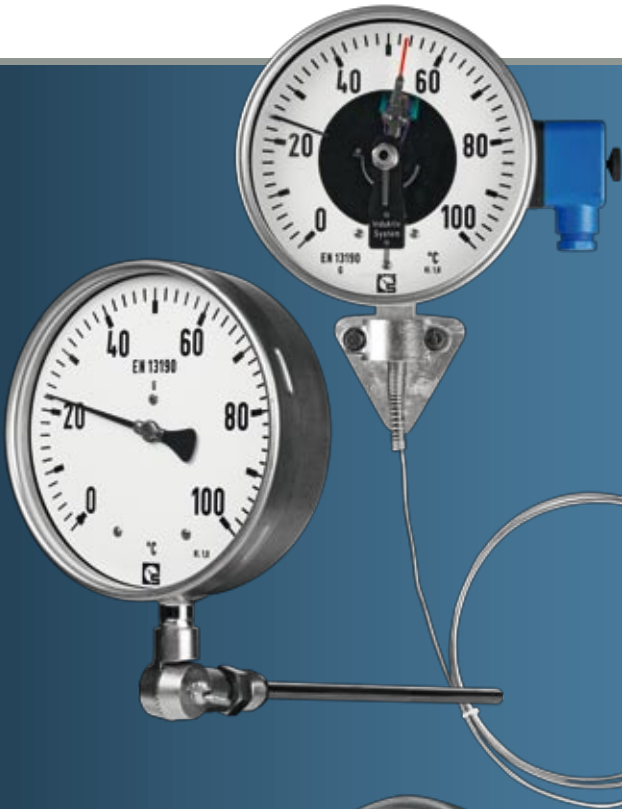
Standard Connection: ½" BSP





We will show you!

Schmierer®



GAS-FILLED DIAL THERMOMETER

☑ Gas-filled dial thermometers are produced in steel or stainless steel; cases are standard in stainless steel. Application with rigid stem or with capillary line. The stem connection can be produced in different variations on request.

Range: -80 °C to +600 °C

Case sizes: 100 mm Ø – 250 mm Ø



BIMETAL DIAL THERMOMETER

☑ Bimetal dial thermometers are produced in steel or stainless steel; cases are standard in stainless steel. The stem connection can be produced in different variations on request.

Range: -80 °C to +500 °C

Case sizes: 100 mm Ø and 160 mm Ø



CONTACT DEVICES AND TRANSMITTERS

Contact devices are suited for installation in pressure- and temperature gauges starting from 63 mm Ø. Contacts are available as Slow-action, Snap-action, Inductive and Electronic version. Transmitters are available as built-in or added versions.

DIAPHRAGM SEALS

☒-Diaphragm Seals are usable in combination with pressure gauges, pressure switches and all kinds of pneumatic and electronic transmitters.

☒-Diaphragm Seals are produced in stainless steel. All wetted parts can be protected using special materials like Tantalum, Titanium, Hastelloy C, Duplex stainless steel, Nickel, Monel, Silver, Gold etc. or coated/lined with PTFE, PP or PVDF.

☒-Diaphragm Seals of all kind of norms or custom-made can be mounted directly or with capillary line to the measuring instrument. Different kind of filling fluids are available on request



ACCESSOIRES

Accessoires for pressure and temperature gauges are part of our large program. Syphons, valves and manifolds, thermowells and flanges of all kind of norms and materials can be produced and supplied.





We will show you!

Schmierer[®]



Schmierer GmbH
Neuweg 2
64521 Groß-Gerau
Germany

Tel: +49 (0)6152-9801-5

Fax: +49 (0)6152-9801-70

E-mail: management@schmierer.de

www.schmierer.de

Germany
Australia/New Zealand
China
Dubai/U.A.E.
France
Hongkong
Indonesia
Iran
Qatar
Malaysia
Netherlands

Austria/Czech Republic/Slovakia
Philippines
Romania
Switzerland
Singapore
Slovenia/Croatia/
Bosnia-Herzegovina
Spain
Taiwan
Thailand
Vietnam