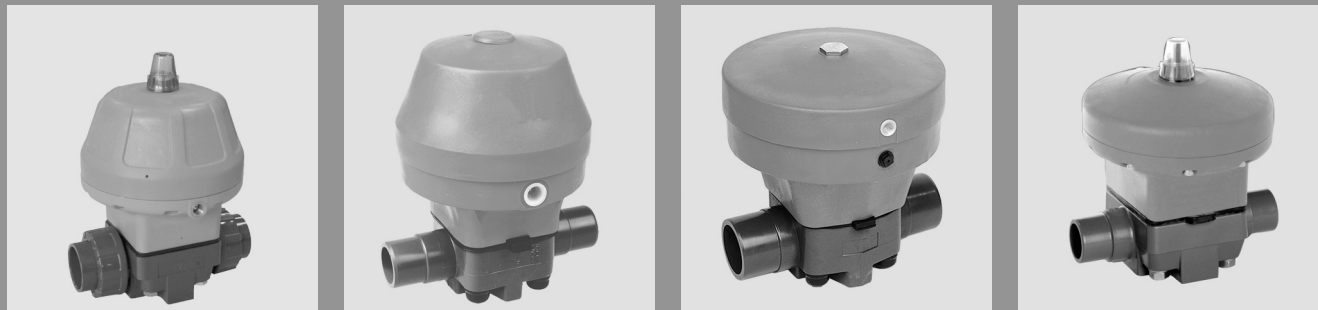


Diaphragm Valve MV 310 - pneumatic - with pneumatically directly controlled actuator



Advantage

- good control characteristics
- DN 15 - DN 50 equipped as standard with visual position indicator and manual emergency control
- DN 15 - DN 50: optionally available with lift limit
- DN 65 - DN 100 optionally available with visual position indicator, lift limit and manual emergency control

Application

- chemical plants
- industrial plants
- water treatment
- electroplating plants

Utilisation

- for shut-off and control purposes in technical processing plants

Flow Media

- Neutral and aggressive fluid or gaseous media, also with abrasive constituents, provided that the valve components coming into contact with the media are resistant at the operating temperature in accordance with the ASV resistance guide.
- For nitric acid or sulfuric acid please specify the precise operating conditions of the application.

Testing

- Requirements and tests/inspections according to DIN 3441, 3442, 8063 and 16962. DIN EN 12266, leakage rate A tested.

Approval

- DIBt approval up to DN 50

Nominal Pressure (H₂O, 20°C)

- PN 6 - PN 10

Fluid Temperature

- see pressure/temperature diagram

Operating Pressure

- see pressure/temperature diagram

Size

- DN 15 - DN 100

Valve Body

- PVC-U
- PVC-C
- PP
- PVDF

Diaphragm

- EPDM
- FPM on request
- PTFE (EPDM diaphragm with PTFE coating on the surfaces coming into contact with the medium)

Bonnet

- DN 15 - DN 50: PP, glass fibre reinforced
- DN 65 - DN 100: aluminium, painted

Sealing

- FPM
- EPDM

Actuation

- with pneumatic lift actuator

Control Function

- NC (normally closed)
- NO (normally open)
- DA (double acting)

Control Pressure

- max. 6 bar (see control curve diagram)

Mounting

- as required

Connection

- DN 15 - DN 50: union DIN 8063
- GFR flange DIN 2501, PN 10/16, with DIN face-to-face dimension
- PP/steel flange DIN 2501, PN 10/16, with DIN face-to-face dimension
- union socket end for solvent welding DIN ISO (PVC-U)
- union socket end for solvent welding DIN ISO (PVC-C)
- union socket end for fusion welding DIN ISO (PP)
- union socket end for fusion welding DIN ISO (PVDF)
- union end acc. to BS, ANSI or JIS on request
- spigot end for solvent welding DIN ISO (PVC-U)
- spigot end for solvent welding DIN ISO (PVC-C)
- fusion spigot end DIN ISO (PP)
- fusion spigot end DIN ISO (PVDF)

Fastening

- via threaded inserts (metal inserts) in the valve body

Accessories

- limit switch unit
- pilot solenoid valve
- positioner
- AS Interface

Lift Limit

- DN 15 - DN 50 standard: Turn the adjustment screw (3.8) clockwise to open the valve in the event of pressure failure.
- DN 65 - DN 100 special version: Order the actuator upper part in the metal version for the NC valve. Please request separate instructions.

Manual Emergency Control

- DN 15 - DN 50 standard: Turn the adjustment screw (3.8) clockwise to open the valve in the event of pressure failure.
- DN 65 - DN 100 special version: Order the actuator upper part in the metal version for the NC valve. Please request separate instructions.

Maintenance Note

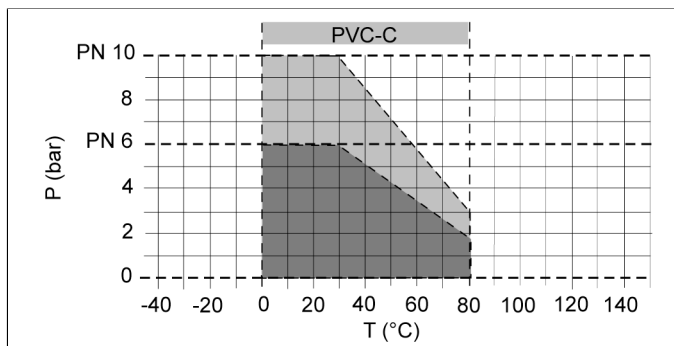
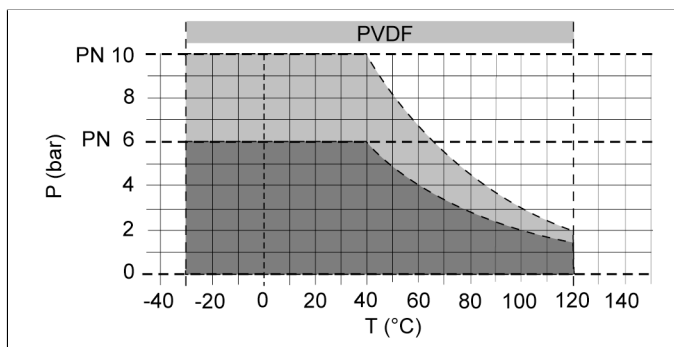
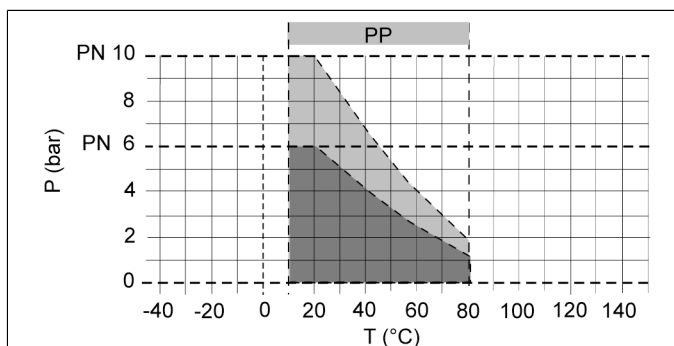
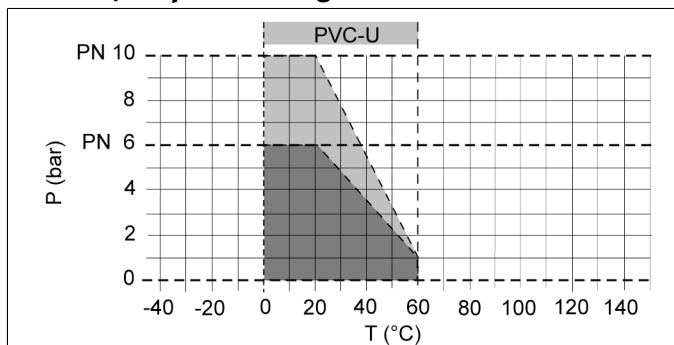
- Check the tightening torque of the body screws at certain intervals in case of setting of the diaphragms and/or temperature fluctuations.
- Refer to the table for the tightening torque

Colour

- body: PVC-U, grey, RAL 7011
- body: PVC-C, grey, RAL 7001
- body: PP, grey, RAL 7032
- body: PVDF, opaque, yellowish-white
- bonnet: orange, RAL 2004
- bonnet: d75 - d100; red
- GFR Flanges: black, RAL 9011
- PP/Steel Flanges: black, RAL 9011

Diaphragm Valve MV 310 - pneumatic -

Pressure/temperature diagram



P = operating pressure

T = temperature

The pressure/temperature limits are applicable for the stated nominal pressures and a computed operating life factor of 25 years. These are standard values for harmless media (DIN 2403), to which the valve material is resistant.

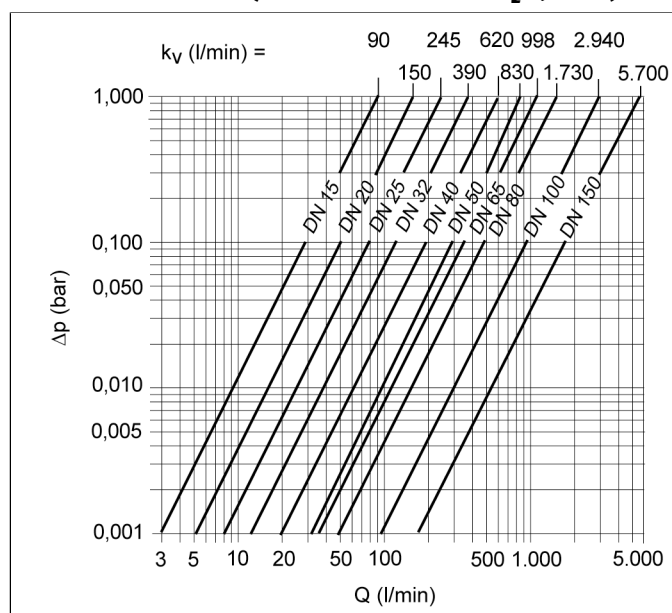
For other media please refer to the ASV resistance guide.

The durability of wear parts depends on the operating conditions of the application.

For temperatures below 0°C (PP < +10°C) please specify the precise operating conditions of the application.

The rated pressure depends on the valve size and material. For the corresponding rated pressure value of the valve, please refer to the »Order table«

Pressure loss curve (standard values for H₂O, 20°C)



ΔP = pressure loss

Q = flow

pressure loss and k_v value

The diagram shows the pressure loss ΔP in relation to the flow Q .

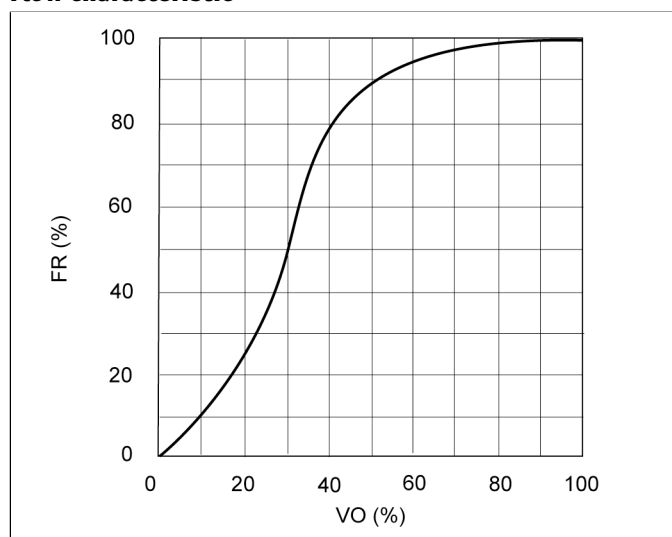
Conversion aid:

$$c_v = k_v \times 0.07; f_v = k_v \times 0.0585$$

Units:

k_v [l/min]; c_v [gal/min] US; f_v [gal/min] GB

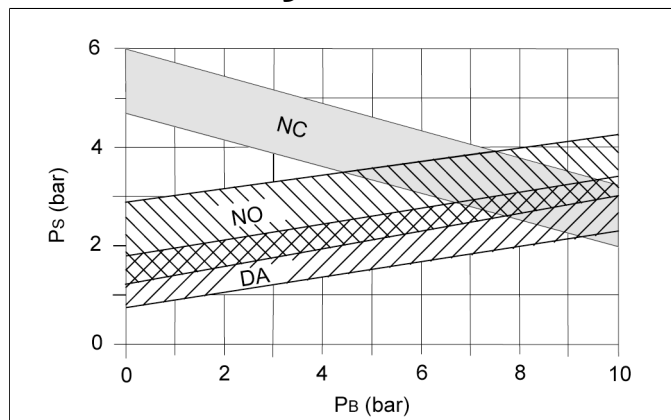
Flow characteristic



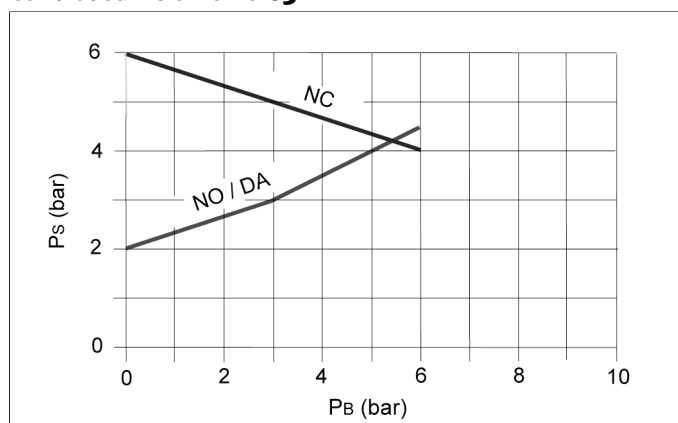
VO = valve opening

$FR = K_v \text{ value}$

Control curve d 20 - d 63



Control curve d 20 - d 63



P_B = Operating pressure
P_S = control pressure

control volume (N Litre)

d (mm)	20	25	32	40	50	63
NC	0,1	0,1	0,23	0,23	0,48	0,48
NO	0,1	0,1	0,22	0,22	0,55	0,55
DA	0,2	0,2	0,45	0,45	1,03	1,03

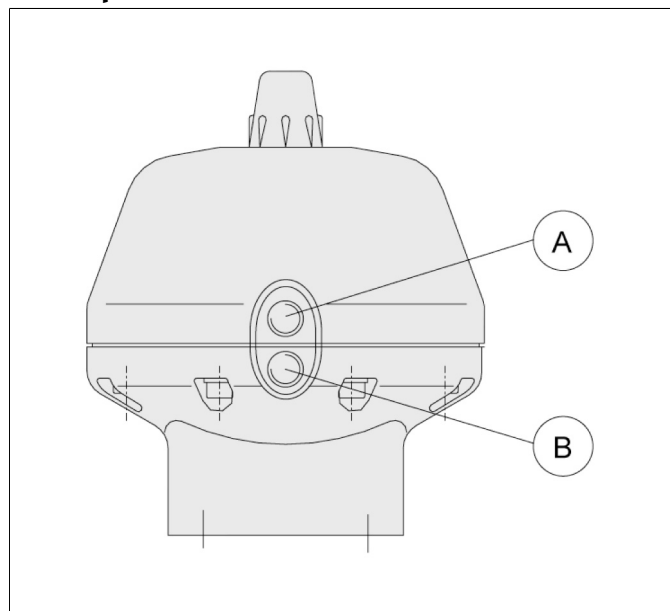
d (mm)	75	90	110
NC	2,1	2,1	2,1
NO	2,2	2,2	2,2
DA	2,2	2,2	2,2

Screw tightening torque (Nm)

d (mm)	20	25	32	40	50	63
Md (Nm) EPDM	6	6	10	10	18	18
Md (Nm) PTFE	8	8	12	12	20	20

d (mm)	75	90	110
Md (Nm) EPDM	40	40	30
Md (Nm) PTFE	50	50	40

Control pressure connection



Normally closed NC: control pressure to connection »B«, valve opens

Normally open NO: control pressure to connection »A«, valve closes

Double acting DA: control pressure to connection »A«, valve closes
control pressure to connection »B«, valve opens

Control:

3/2-way solenoid valves for NC/NO actuators

5/2-way solenoid valves for DA actuators

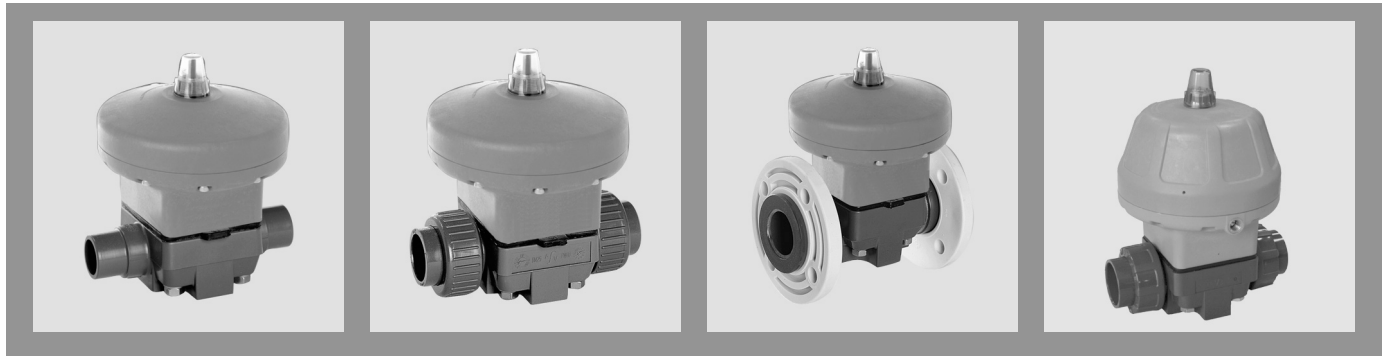
Note:

The drives require a control pressure of 6 bar for optimum function. Malfunctions may occur, if the control pressure deviates. In this case, a new drive configuration is necessary.

Operating note

Safe operation of the valve can only be ensured if it is properly installed, operated, serviced or repaired by qualified personnel according to its intended use while observing the accident prevention regulations, safety regulations, relevant standards, directives/technical regulations or codes of practice such as e.g. DIN, DIN EN, DIN ISO and DVS*. *DVS = German Welding Society. The intended use includes adhering to specified limit values for pressure and temperature, as well as checking the resistance. This requires all components coming into contact with the medium to be "resistant" in accordance with the ASV resistance guide. Please take into account that the material PTFE is classified as resistant against many media, however, PTFE is not diffusion tight when used as a film, e.g. for the ASV membranes. Please contact us for limit cases (nitric acid or sulfuric acid).

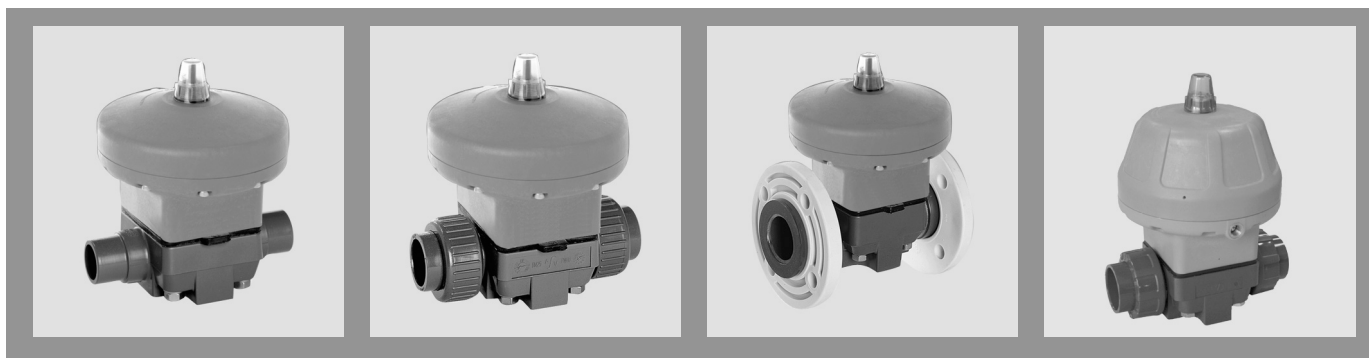
Diaphragm Valve MV 310 - pneumatic -, [d20 - d63]



Actuator variant NC		body PVC-U							
<i>size</i>	d(mm)			20	25	32	40	50	63
	<i>pressure range</i>	DN(mm)		15	20	25	32	40	50
		DN(inch)		1/2	3/4	1	1 1/4	1 1/2	2
		PN(bar)		10	10	10	10	10	10
<i>Connection</i>	<i>diaphragm</i>	<i>sealing</i>	<i>ident No.</i>						
	PVC-U socket end DIN ISO	EPDM PTFE	EPDM FPM	122818 122825	122819 122826	122820 122827	122821 122828	122822 122829	122823 122830
<i>weight</i>			1,57 kg	1,58 kg	3,13 kg	3,22 kg	6,45 kg	6,85 kg	
	PVC-U spigot end DIN ISO	EPDM PTFE	EPDM FPM	67324 67340	67325 67341	67326 67342	67327 67343	67328 67344	67329 67345
	<i>weight</i>		1,45 kg	1,48 kg	2,86 kg	2,92 kg	6,15 kg	6,25 kg	
GFR flange DIN 2501	EPDM PTFE	EPDM FPM	122860 122870	122861 122871	122862 122872	122863 122873	122864 122874	122865 122875	
	<i>weight</i>		1,72 kg	2,50 kg	3,36 kg	5,79 kg	7,10 kg	7,54 kg	

Actuator variant NO		body PVC-U							
<i>size</i>	d(mm)			20	25	32	40	50	63
	<i>pressure range</i>	DN(mm)		15	20	25	32	40	50
		DN(inch)		1/2	3/4	1	1 1/4	1 1/2	2
		PN(bar)		10	10	10	10	10	10
<i>Connection</i>	<i>diaphragm</i>	<i>sealing</i>	<i>ident No.</i>						
	PVC-U socket end DIN ISO	EPDM PTFE	EPDM FPM	122832 122839	122833 122840	122834 122841	122835 122842	122836 122843	122837 122844
<i>weight</i>			1,57 kg	1,58 kg	3,13 kg	3,22 kg	6,45 kg	6,85 kg	
	PVC-U spigot end DIN ISO	EPDM PTFE	EPDM FPM	67552 67564	67553 67565	67554 67566	67555 67567	67556 67568	67557 67569
	<i>weight</i>		1,45 kg	1,48 kg	2,86 kg	2,92 kg	6,15 kg	6,25 kg	
GFR flange DIN 2501	EPDM PTFE	EPDM FPM	122880 122890	122881 122891	122882 122892	122883 122893	122884 122894	122885 122895	
	<i>weight</i>		1,72 kg	2,50 kg	3,36 kg	5,79 kg	7,10 kg	7,54 kg	

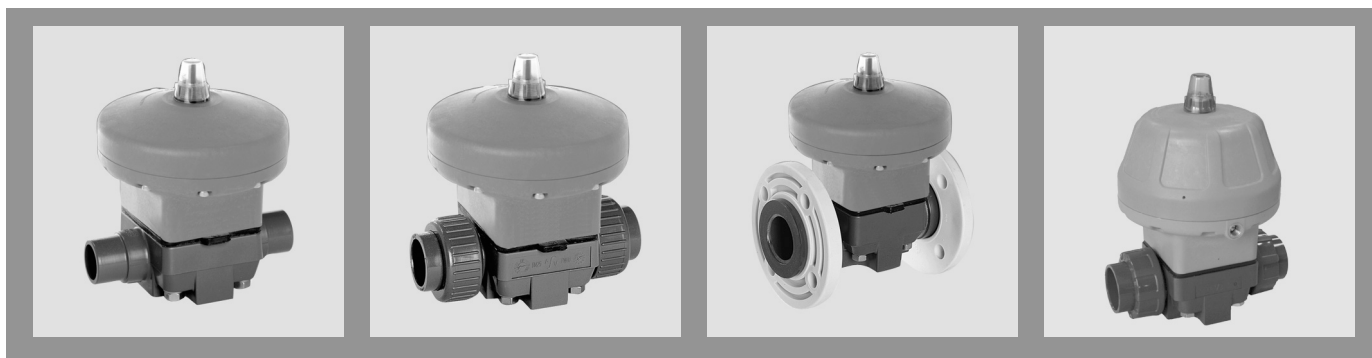
Diaphragm Valve MV 310 - pneumatic -, [d20 - d63]



Actuator variant DA		body PVC-U							
size pressure range	d(mm)		20	25	32	40	50	63	
	DN(mm)		15	20	25	32	40	50	
	DN(inch)		1/2	3/4	1	1 1/4	1 1/2	2	
	PN(bar)		10	10	10	10	10	10	
Connection	diaphragm	sealing	ident No.						
PVC-U socket end DIN ISO	EPDM	EPDM	122846	122847	122848	122849	122850	122851	
	PTFE	FPM	122853	122854	122855	122856	122857	122858	
	weight		1,27 kg	1,28 kg	2,83 kg	2,92 kg	6,15 kg	6,55 kg	
PVC-U spigot end DIN ISO	EPDM	EPDM	64405	64406	64407	64408	64409	64410	
	PTFE	FPM	64417	64418	64419	64420	64421	64422	
	weight		1,15 kg	1,18 kg	2,56 kg	2,62 kg	5,85 kg	5,95 kg	
GFR flange DIN 2501	EPDM	EPDM	122900	122901	122902	122903	122904	122905	
	PTFE	FPM	122910	122911	122912	122913	122914	122915	
	weight		1,42 kg	2,20 kg	3,06 kg	5,49 kg	6,80 kg	7,24 kg	

Actuator variant NC		body PVC-C							
size pressure range	d(mm)		20	25	32	40	50	63	
	DN(mm)		15	20	25	32	40	50	
	DN(inch)		1/2	3/4	1	1 1/4	1 1/2	2	
	PN(bar)		10	10	10	10	10	10	
Connection	diaphragm	sealing	ident No.						
PVC-C socket end DIN ISO	EPDM	EPDM	131300	131301	131302	131303	131304	131305	
	PTFE	FPM	131307	131308	131309	131310	131311	131312	
	weight		1,56 kg	1,62 kg	3,06 kg	3,26 kg	6,50 kg	6,88 kg	
PVC-C spigot end DIN ISO	EPDM	EPDM	131240	131241	131242	131243	131244	131245	
	PTFE	FPM	131250	131251	131252	131253	131254	131255	
	weight		1,45 kg	1,48 kg	2,86 kg	2,92 kg	6,15 kg	6,25 kg	
PP / steel flange DIN 2501	EPDM	EPDM	131342	131343	131344	131345	131346	131347	
	PTFE	FPM	131352	131353	131354	131355	131356	131357	
	weight		1,87 kg	2,11 kg	3,63 kg	3,60 kg	7,56 kg	7,19 kg	

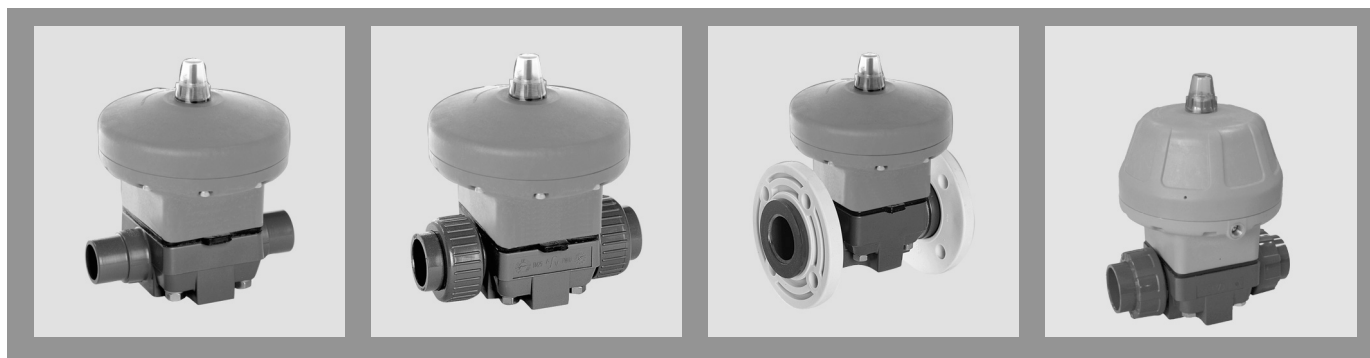
Diaphragm Valve MV 310 - pneumatic -, [d20 - d63]



Actuator variant NO		body PVC-C							
<i>size</i>	d(mm)			20	25	32	40	50	63
	<i>pressure range</i>	DN(mm)		15	20	25	32	40	50
		DN(inch)		1/2	3/4	1	1 1/4	1 1/2	2
		PN(bar)		10	10	10	10	10	10
<i>Connection</i>	<i>diaphragm</i>	<i>sealing</i>	<i>ident No.</i>						
	PVC-C socket end DIN ISO	EPDM PTFE	EPDM FPM	131314 131321	131315 131322	131316 131323	131317 131324	131318 131325	131319 131326
<i>weight</i>			1,57 kg	1,58 kg	3,13 kg	3,22 kg	6,45 kg	6,85 kg	
	PVC-C spigot end DIN ISO	EPDM PTFE	EPDM FPM	131260 131270	131261 131271	131262 131272	131263 131273	131264 131274	131265 131275
	<i>weight</i>		1,45 kg	1,48 kg	2,86 kg	2,92 kg	6,15 kg	6,25 kg	
PP / steel flange DIN 2501	EPDM PTFE	EPDM FPM	131362 131372	131363 131373	131364 131374	131365 131375	131366 131376	131367 131377	
	<i>weight</i>		1,87 kg	2,11 kg	3,63 kg	3,60 kg	7,56 kg	7,19 kg	

Actuator variant DA		body PVC-C							
<i>size</i>	d(mm)			20	25	32	40	50	63
	<i>pressure range</i>	DN(mm)		15	20	25	32	40	50
		DN(inch)		1/2	3/4	1	1 1/4	1 1/2	2
		PN(bar)		10	10	10	10	10	10
<i>Connection</i>	<i>diaphragm</i>	<i>sealing</i>	<i>ident No.</i>						
	PVC-C socket end DIN ISO	EPDM PTFE	EPDM FPM	131328 131335	131329 131336	131330 131337	131331 131338	131332 131339	131333 131340
<i>weight</i>			1,26 kg	1,32 kg	2,76 kg	2,96 kg	6,20 kg	6,58 kg	
	PVC-C spigot end DIN ISO	EPDM PTFE	EPDM FPM	131280 131290	131281 131291	131282 131292	131283 131293	131284 131294	131285 131295
	<i>weight</i>		1,15 kg	1,18 kg	2,56 kg	2,62 kg	5,85 kg	5,95 kg	
PP / steel flange DIN 2501	EPDM PTFE	EPDM FPM	131382 131392	131383 131393	131384 131394	131385 131395	131386 131396	131387 131397	
	<i>weight</i>		1,57 kg	1,81 kg	3,33 kg	3,30 kg	7,26 kg	6,89 kg	

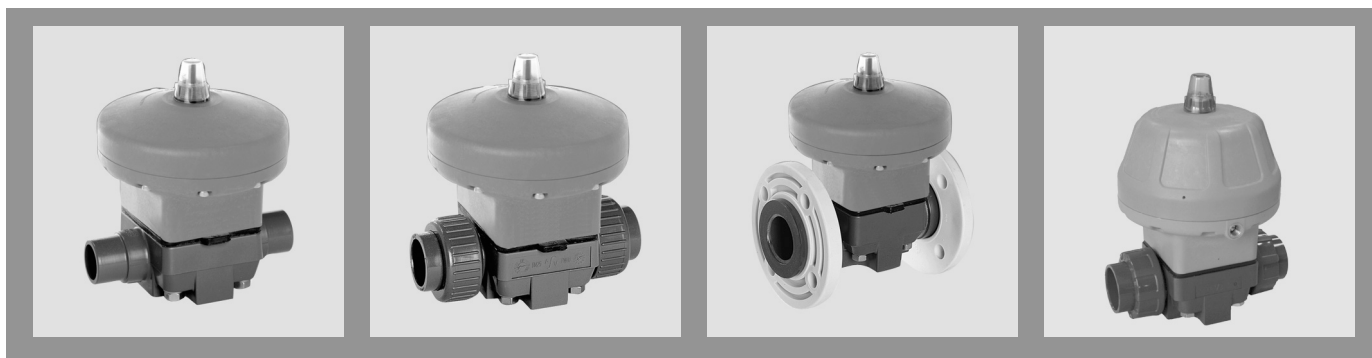
Diaphragm Valve MV 310 - pneumatic -, [d20 - d63]



Actuator variant NC		body PP							
size pressure range	d(mm)		20	25	32	40	50	63	
	DN(mm)		15	20	25	32	40	50	
	DN(inch)		1/2	3/4	1	1 1/4	1 1/2	2	
	PN(bar)		10	10	10	10	10	10	
Connection	diaphragm	sealing	ident No.						
PP socket end DIN ISO	EPDM	EPDM	122954	122955	122956	122957	122958	122959	
	PTFE	FPM	122961	122962	122963	122964	122965	122966	
	weight		1,43 kg	1,45 kg	2,81 kg	2,87 kg	6,03 kg	6,15 kg	
PP spigot end DIN ISO	EPDM	EPDM	67346	67347	67348	67349	67350	67351	
	PTFE	FPM	67358	67359	67360	67361	67362	67363	
	weight		1,42 kg	1,43 kg	2,78 kg	2,82 kg	5,96 kg	6,03 kg	
GFR flange DIN 2501	EPDM	EPDM	122989	122990	122991	122992	122993	122994	
	PTFE	FPM	122999	123000	123001	123002	123003	123004	
	weight		1,65 kg	1,76 kg	3,24 kg	3,56 kg	6,87 kg	7,15 kg	

Actuator variant NO		body PP							
size pressure range	d(mm)		20	25	32	40	50	63	
	DN(mm)		15	20	25	32	40	50	
	DN(inch)		1/2	3/4	1	1 1/4	1 1/2	2	
	PN(bar)		10	10	10	10	10	10	
Connection	diaphragm	sealing	ident No.						
PP socket end DIN ISO	EPDM	EPDM	123291	123292	123293	123294	123295	123296	
	PTFE	FPM	122968	122969	122970	122971	122972	122973	
	weight		1,43 kg	1,45 kg	2,81 kg	2,87 kg	6,03 kg	6,15 kg	
PP spigot end DIN ISO	EPDM	EPDM	67570	67571	67572	67573	67574	67575	
	PTFE	FPM	67582	67583	67584	67585	67586	67587	
	weight		1,42 kg	1,43 kg	2,78 kg	2,82 kg	5,96 kg	6,03 kg	
GFR flange DIN 2501	EPDM	EPDM	123009	123010	123011	123012	123013	123014	
	PTFE	FPM	123237	123238	123239	123240	123241	123242	
	weight		1,65 kg	1,76 kg	3,24 kg	3,56 kg	6,87 kg	7,15 kg	

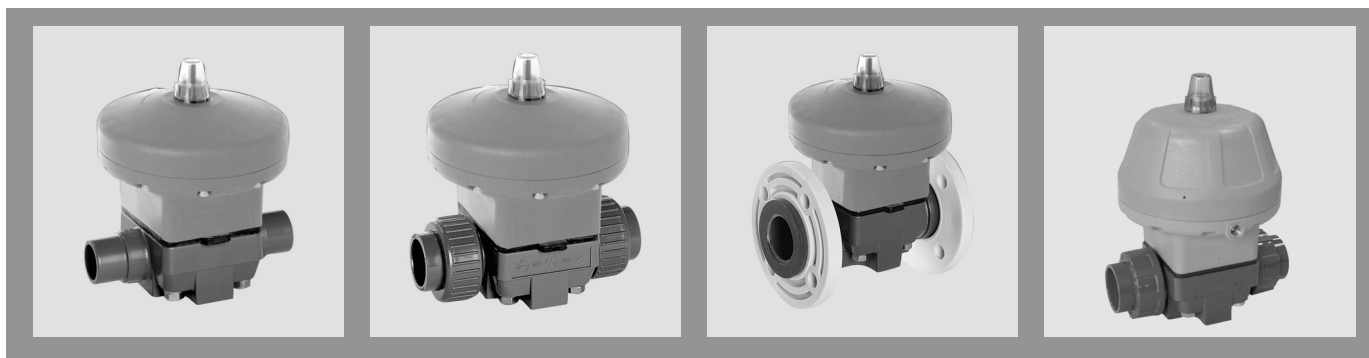
Diaphragm Valve MV 310 - pneumatic -, [d20 - d63]



Actuator variant DA		body PP							
<i>size</i>	d(mm)			20	25	32	40	50	63
	<i>pressure range</i>	DN(mm)		15	20	25	32	40	50
		DN(inch)		1/2	3/4	1	1 1/4	1 1/2	2
		PN(bar)		10	10	10	10	10	10
<i>Connection</i>	<i>diaphragm</i>	<i>sealing</i>	<i>ident No.</i>						
	PP socket end DIN ISO	EPDM PTFE	EPDM FPM	122975 122982	122976 122983	122977 122984	122978 122985	122979 122986	122980 122987
<i>weight</i>			1,13 kg	1,15 kg	2,51 kg	2,57 kg	5,73 kg	5,85 kg	
	PP spigot end DIN ISO	EPDM PTFE	EPDM FPM	64423 64435	64424 64436	64425 64437	64426 64438	64427 64439	64428 64440
	<i>weight</i>		1,12 kg	1,13 kg	2,48 kg	2,52 kg	5,66 kg	5,73 kg	
GFR flange DIN 2501	EPDM PTFE	EPDM FPM	123019 123029	123020 123030	123021 123031	123022 123032	123023 123033	123024 123034	
	<i>weight</i>		1,35 kg	1,46 kg	2,94 kg	3,26 kg	6,57 kg	6,85 kg	

Actuator variant NC		body PVDF							
<i>size</i>	d(mm)			20	25	32	40	50	63
	<i>pressure range</i>	DN(mm)		15	20	25	32	40	50
		DN(inch)		1/2	3/4	1	1 1/4	1 1/2	2
		PN(bar)		10	10	10	10	10	10
<i>Connection</i>	<i>diaphragm</i>	<i>sealing</i>	<i>ident No.</i>						
	PVDF socket end DIN ISO	PTFE	FPM	123090	123091	123092	123093	123094	123095
<i>weight</i>			1,60 kg	1,61 kg	3,19 kg	3,32 kg	6,60 kg	7,05 kg	
	PVDF spigot end DIN ISO	PTFE	FPM	67364	67365	67366	67367	67368	67369
	<i>weight</i>		1,48 kg	1,51 kg	2,92 kg	3,02 kg	6,30 kg	6,45 kg	
PP / steel flange DIN 2501	PTFE	FPM	123135	123136	123137	123138	123139	123140	
	<i>weight</i>		1,91 kg	2,15 kg	3,70 kg	3,72 kg	7,74 kg	7,40 kg	

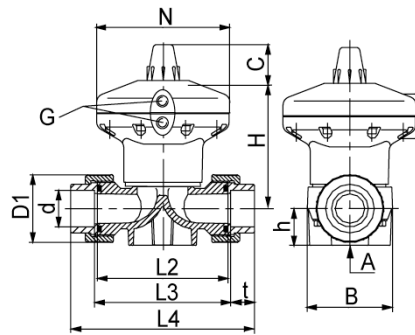
Diaphragm Valve MV 310 - pneumatic -, [d20 - d63]



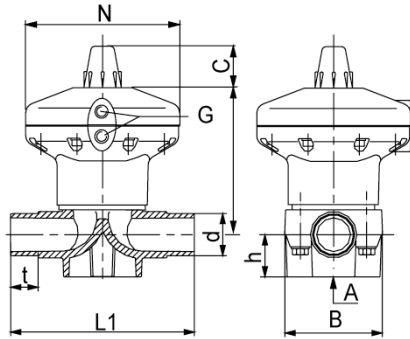
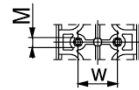
Actuator variant NO		body PVDF							
size pressure range	d(mm)		20	25	32	40	50	63	
	DN(mm)		15	20	25	32	40	50	
	DN(inch)		1/2	3/4	1	1 1/4	1 1/2	2	
	PN(bar)		10	10	10	10	10	10	
Connection	diaphragm	sealing	ident No.						
PVDF socket end DIN ISO	PTFE	FPM	123104	123105	123106	123107	123108	123109	
	weight		1,60 kg	1,61 kg	3,19 kg	3,32 kg	6,60 kg	7,05 kg	
PVDF spigot end DIN ISO	PTFE	FPM	67588	67589	67590	67591	67592	67593	
	weight		1,48 kg	1,51 kg	2,92 kg	3,02 kg	6,30 kg	6,45 kg	
PP / steel flange DIN 2501	PTFE	FPM	123227	123228	123229	123230	123231	123232	
	weight		1,91 kg	2,15 kg	3,70 kg	3,72 kg	7,74 kg	7,40 kg	

Actuator variant DA		body PVDF							
size pressure range	d(mm)		20	25	32	40	50	63	
	DN(mm)		15	20	25	32	40	50	
	DN(inch)		1/2	3/4	1	1 1/4	1 1/2	2	
	PN(bar)		10	10	10	10	10	10	
Connection	diaphragm	sealing	ident No.						
PVDF socket end DIN ISO	PTFE	FPM	123118	123119	123120	123121	123122	123123	
	weight		1,30 kg	1,31 kg	2,89 kg	3,02 kg	6,30 kg	6,75 kg	
PVDF spigot end DIN ISO	PTFE	FPM	64441	64442	64443	64444	64445	64446	
	weight		1,18 kg	1,21 kg	2,62 kg	2,72 kg	6,00 kg	6,15 kg	
PP / steel flange DIN 2501	PTFE	FPM	123165	123166	123167	123168	123169	123170	
	weight		1,61 kg	1,85 kg	3,40 kg	3,42 kg	7,44 kg	7,10 kg	

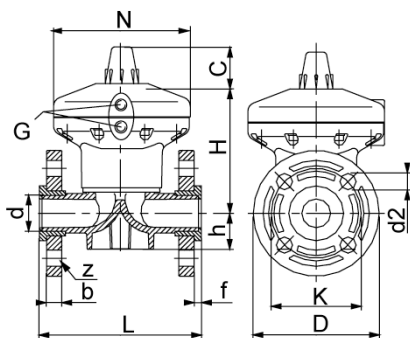
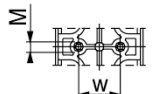
Diaphragm Valve MV 310 - pneumatic -, [d20 - d63]



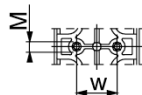
Ansicht A/View A



Ansicht A/View A



Ansicht A/View A



dimensions

d(mm)		20	25	32	40	50	63
DN(mm)		15	20	25	32	40	50
DN(inch)		1/2	3/4	1	1 1/4	1 1/2	2
dimensions(mm)							
PP/PVC-U	b	12	14	15	17	17	18
PVC-C/PVDF	b	13	14,5	15,5	17,5	17,5	19
	B	72	72	92	92	119	119
DA/NO	C	41	41	41	41	41	41
NC	C	29	29	29	29	41	41
	d2	14	14	14	18	18	18
	D	95	105	115	140	150	165
PP	D1	46	56	66	79	87	107
PVC-C/PVC-U	D1	41	50	58	72	79	98
PVDF	D1	47	57	64	78	89	109
	f	6	7	7	8	8	9
	G	1/4	1/4	1/4	1/4	1/4	1/4
	h	26	26	26	40	40	40
DA/NO	H	113	113	139	139	155	155
NC	H	136	136	175	175	207	207
	K	65	75	85	100	110	125
	L	130	150	160	180	200	230
	L1	124	144	154	174	194	224
	L2	90	108	116	134	154	184
	L3	96	114	122	140	160	190
PP	L4	125	146	158	181	207	244
PVC-C/PVC-U	L4	128	152	166	192	222	266
PVDF	L4	128	150	162	184	210	248
	M	M6	M6	M6	M8	M8	M8
	N	122	122	152	152	192	192
PP/PVDF	t	16	19	21	23	26	30
PVC-C/PVC-U	t	16	19	22	26	31	38
	w	26	26	26	45	45	45
	z	4	4	4	4	4	4

Diaphragm Valve MV 310 - pneumatic -, [d75 - d110]



Actuator variant NC		body PVC-U				
size pressure range	d(mm)			75	90	110
	DN(mm)			65	80	100
	DN(inch)			2 1/2	3	4
	PN(bar)			6	6	6
Connection	diaphragm	sealing	ident No.			
PVC-U spigot end DIN ISO	EPDM	EPDM		113623	43292	119768
	PTFE	FPM		119769	110283	119770
	weight			15,00 kg	15,50 kg	25,50 kg
GFR flange DIN 2501	EPDM	EPDM		122866	122867	122868
	PTFE	FPM		122876	122877	122878
	weight			16,34 kg	17,12 kg	27,62 kg

Actuator variant NO		body PVC-U				
size pressure range	d(mm)			75	90	110
	DN(mm)			65	80	100
	DN(inch)			2 1/2	3	4
	PN(bar)			6	6	6
Connection	diaphragm	sealing	ident No.			
PVC-U spigot end DIN ISO	EPDM	EPDM		119781	119782	45662
	PTFE	FPM		119783	111771	119784
	weight			16,00 kg	16,00 kg	25,00 kg
GFR flange DIN 2501	EPDM	EPDM		122886	122887	122888
	PTFE	FPM		122896	122897	122898
	weight			17,34 kg	17,62 kg	27,12 kg

Diaphragm Valve MV 310 - pneumatic -, [d75 - d110]

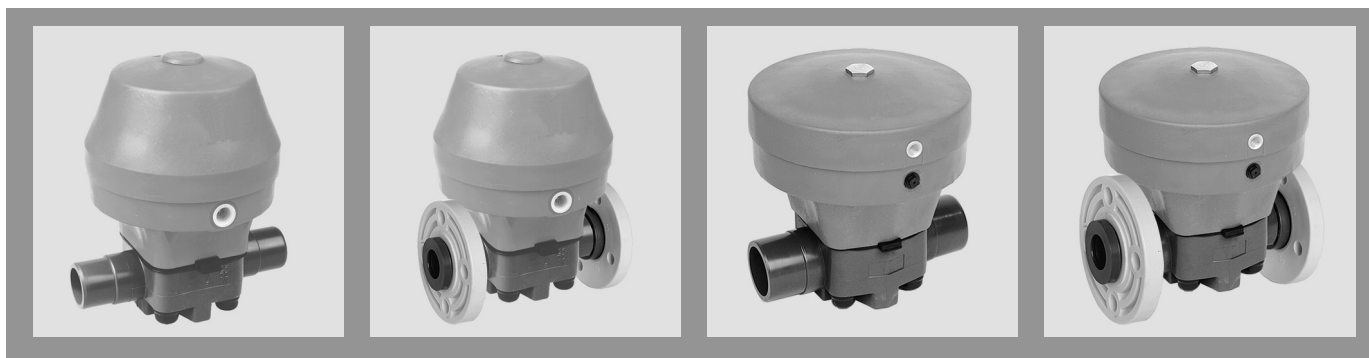


Actuator variant DA		body PVC-U			
<i>size</i> <i>pressure range</i>	d(mm)		75	90	110
	DN(mm)		65	80	100
	DN(inch)		2 1/2	3	4
	PN(bar)		6	6	6
<i>Connection</i>	<i>diaphragm</i>	<i>sealing</i>	<i>ident No.</i>		
	PVC-U spigot end DIN ISO	EPDM PTFE <i>weight</i>	EPDM FPM	119794 119795 16,00 kg	110692 110139 16,00 kg
GFR flange DIN 2501	EPDM	EPDM	122906	122907	122908
	PTFE	FPM	122916	122917	122918
	<i>weight</i>		17,34 kg	17,62 kg	27,12 kg

Actuator variant NC		body PVC-C			
<i>size</i> <i>pressure range</i>	d(mm)		75	90	110
	DN(mm)		65	80	100
	DN(inch)		2 1/2	3	4
	PN(bar)		6	6	6
<i>Connection</i>	<i>diaphragm</i>	<i>sealing</i>	<i>ident No.</i>		
	PP / steel flange DIN 2501	EPDM PTFE <i>weight</i>	EPDM FPM	131348 131358 17,60 kg	131349 131359 18,72 kg

Actuator variant NO		body PVC-C			
<i>size</i> <i>pressure range</i>	d(mm)		75	90	110
	DN(mm)		65	80	100
	DN(inch)		2 1/2	3	4
	PN(bar)		6	6	6
<i>Connection</i>	<i>diaphragm</i>	<i>sealing</i>	<i>ident No.</i>		
	PP / steel flange DIN 2501	EPDM PTFE <i>weight</i>	EPDM FPM	131368 131378 18,60 kg	131369 131379 19,22 kg

Diaphragm Valve MV 310 - pneumatic -, [d75 - d110]

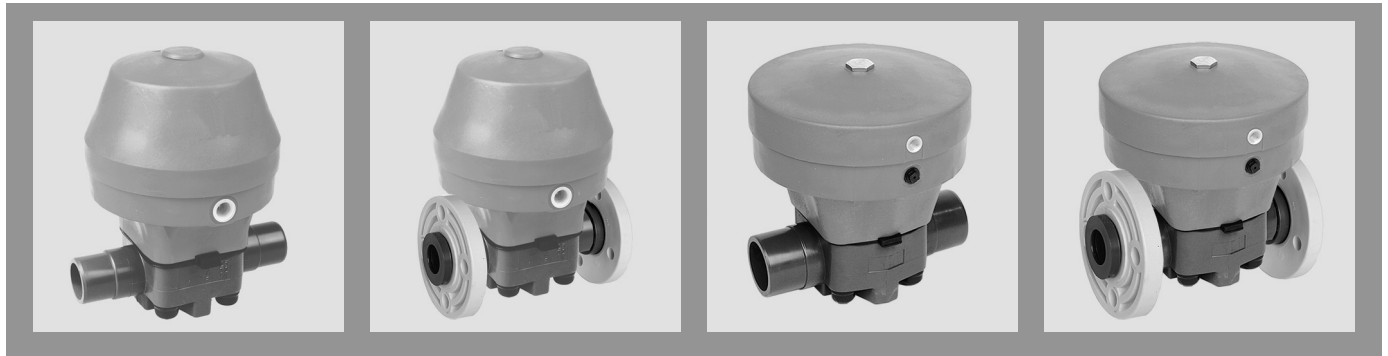


Actuator variant DA		body PVC-C			
size pressure range	d(mm)		75	90	110
	DN(mm)		65	80	100
	DN(inch)		2 1/2	3	4
	PN(bar)		6	6	6
Connection	diaphragm	sealing	ident No.		
	PP / steel flange DIN 2501	EPDM PTFE weight	EPDM FPM	131388 131398 18,60 kg	131389 131399 19,22 kg

Actuator variant NC		body PP			
size pressure range	d(mm)		75	90	110
	DN(mm)		65	80	100
	DN(inch)		2 1/2	3	4
	PN(bar)		6	6	6
Connection	diaphragm	sealing	ident No.		
	PP spigot end DIN ISO	EPDM PTFE weight	EPDM FPM	111961 119773 14,50 kg	119128 113858 15,00 kg
GFR flange DIN 2501	EPDM	EPDM	122995	122996	122997
	PTFE	FPM	123005	123006	123007
	weight		15,87 kg	16,63 kg	27,10 kg

Actuator variant NO		body PP			
size pressure range	d(mm)		75	90	110
	DN(mm)		65	80	100
	DN(inch)		2 1/2	3	4
	PN(bar)		6	6	6
Connection	diaphragm	sealing	ident No.		
	PP spigot end DIN ISO	EPDM PTFE weight	EPDM FPM	119127 112250 16,00 kg	119162 119786 16,00 kg
GFR flange DIN 2501	EPDM	EPDM	123015	123016	123017
	PTFE	FPM	123243	123244	123245
	weight		16,87 kg	17,13 kg	26,60 kg

Diaphragm Valve MV 310 - pneumatic -, [d75 - d110]

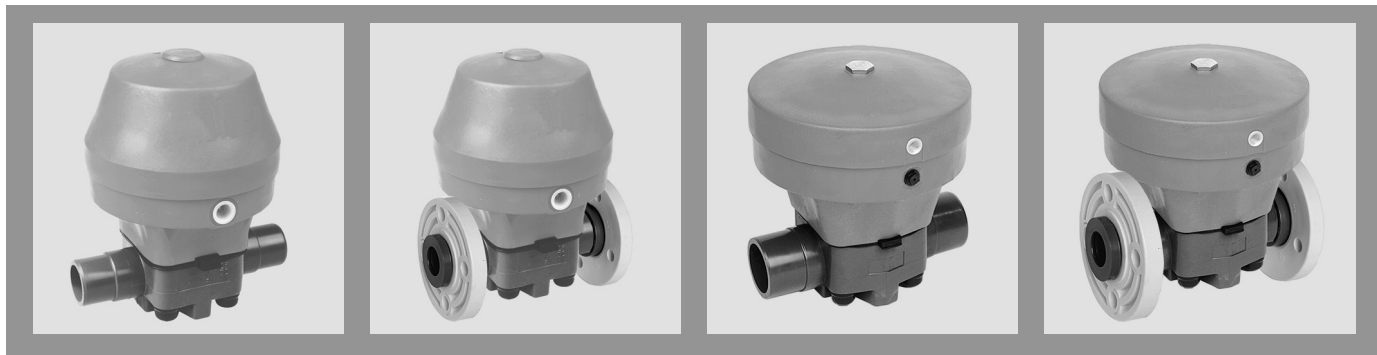


Actuator variant DA		body PP				
size pressure range	d(mm)			75	90	110
	DN(mm)			65	80	100
	DN(inch)			2 1/2	3	4
	PN(bar)			6	6	6
Connection	diaphragm	sealing	ident No.			
PP spigot end DIN ISO	EPDM	EPDM		119796	119797	119798
	PTFE	FPM		119799	110156	119800
	weight			16,00 kg	16,00 kg	25,00 kg
GFR flange DIN 2501	EPDM	EPDM		123025	123026	123027
	PTFE	FPM		123035	123036	123037
	weight			16,87 kg	17,13 kg	26,60 kg

Actuator variant NC		body PVDF				
size pressure range	d(mm)			75	90	110
	DN(mm)			65	80	100
	DN(inch)			2 1/2	3	4
	PN(bar)			6	6	6
Connection	diaphragm	sealing	ident No.			
PVDF spigot end DIN ISO	PTFE	FPM		119778	119779	119780
	weight			15,50 kg	16,00 kg	26,00 kg
	PP / steel flange DIN 2501	PTFE	FPM		123141	123142
	weight			18,13 kg	19,23 kg	29,76 kg

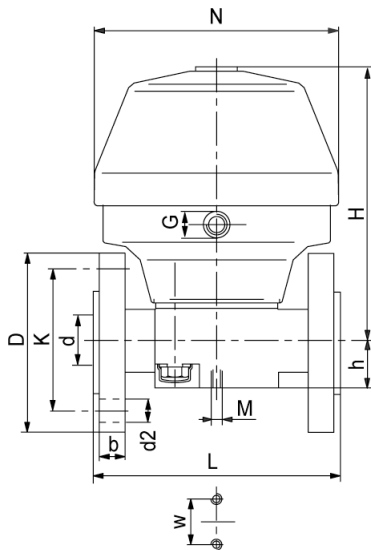
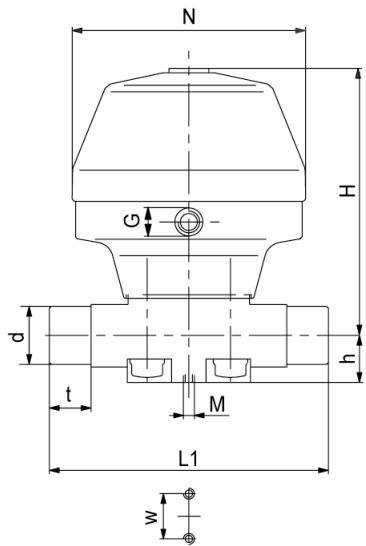
Actuator variant NO		body PVDF				
size pressure range	d(mm)			75	90	110
	DN(mm)			65	80	100
	DN(inch)			2 1/2	3	4
	PN(bar)			6	6	6
Connection	diaphragm	sealing	ident No.			
PVDF spigot end DIN ISO	PTFE	FPM		119791	119792	119793
	weight			16,00 kg	16,00 kg	25,00 kg
	PP / steel flange DIN 2501	PTFE	FPM		123233	123234
	weight			19,13 kg	19,73 kg	29,26 kg

Diaphragm Valve MV 310 - pneumatic -, [d75 - d110]



Actuator variant DA		body PVDF				
size pressure range	d(mm)		75	90	110	
	DN(mm)		65	80	100	
	DN(inch)		2 1/2	3	4	
	PN(bar)		6	6	6	
Connection	diaphragm	sealing	ident No.			
	PVDF spigot end DIN ISO	PTFE	FPM	119804	119805	119806
	weight			16,00 kg	16,00 kg	25,00 kg
PP / steel flange DIN 2501	PTFE	FPM	123171	123172	123173	
	weight		19,13 kg	19,73 kg	29,26 kg	

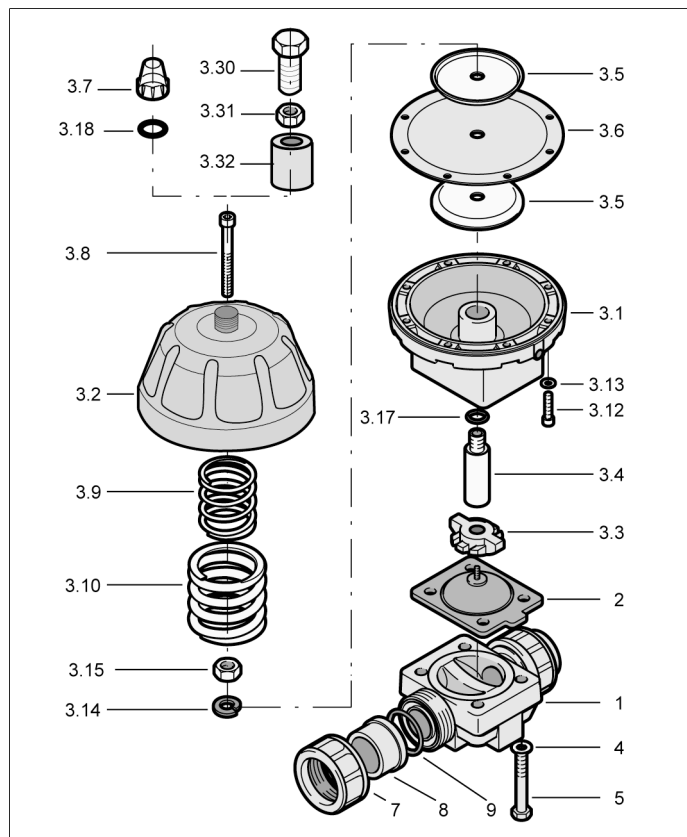
Diaphragm Valve MV 310 - pneumatic -, [d75 - d110]



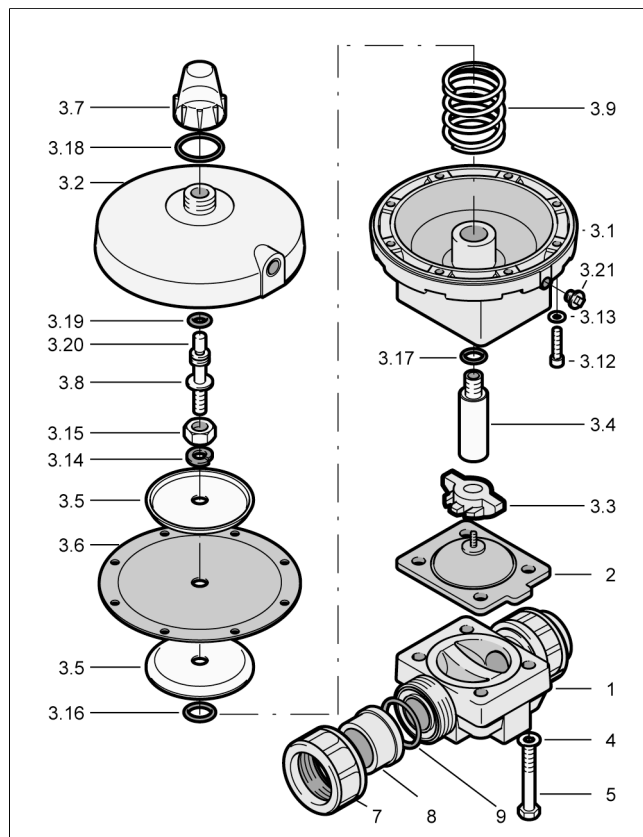
dimensions

d(mm)	75	90	110
DN(mm)	65	80	100
DN(inch)	2 1/2	3	4
dimensions(mm)			
PP/PVC-U	b	18	20
PVC-C/PVDF	b	19	21
	d2	18	18
	D	185	200
	G	1/4	1/4
	h	55	64
DA/NO	H	305	330
NC	H	325	355
	K	145	160
	L	290	310
	L1	284	300
	M	M12	M12
	N	258	258
PP/PVDF	t	33,5	41,5
PVC-U	t	44	61
	w	100	120
	z	4	8

parts lists

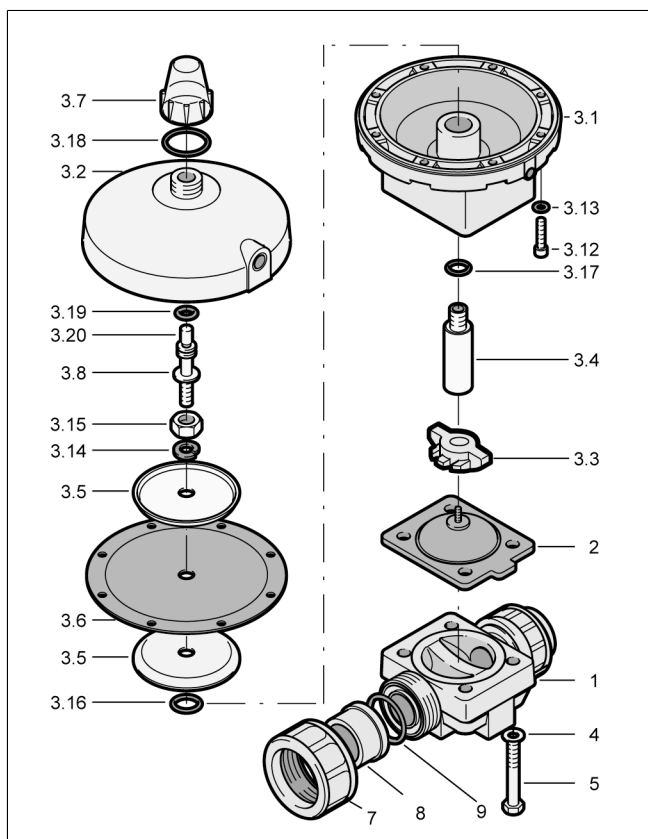


position	quantity	designation
1	1	valve body
2	1	diaphragm
3.1	1	actuator bottom part
3.2	1	actuator upper part
3.3	1	pressure piece
3.4	1	actuator rod
3.5	2	diaphragm disc
3.6	1	diaphragm
3.7	1	indicator cap
3.8	1	adjustment screw
3.9	1	pressure spring
3.10	1	pressure spring
3.12	8/10	socket head cap screw
3.13	8/10	washer
3.14	1	circlip
3.15	1	hexagon nut
3.17	1	O-ring
3.18	1	O-ring
3.30	1	hexagon bolt
3.31	1	hexagon nut
3.32	1	Lift limit
4	4	washer
5	4	hexagon bolt
7	2	union nut
8	2	union end
9	2	O-ring



position	quantity	designation
1	1	valve body
2	1	diaphragm
3.1	1	actuator bottom part
3.2	1	actuator upper part
3.3	1	pressure piece
3.4	1	actuator rod
3.5	2	diaphragm disc
3.6	1	diaphragm
3.7	1	indicator cap
3.8	1	adjustment screw
3.9	1	pressure spring
3.12	8/10	socket head cap screw
3.13	8/10	washer
3.14	1	circlip
3.15	1	hexagon nut
3.16	1	O-ring
3.17	1	O-ring
3.18	1	O-ring
3.19	1	O-ring
3.20	1	indicator pin
3.21	1	Plug
4	4	washer
5	4	hexagon bolt
7	2	union nut
8	2	union end
9	2	O-ring

Diaphragm Valve MV 310 - pneumatic -



position	quantity	designation
1	1	valve body
2	1	diaphragm
3.1	1	actuator bottom part
3.2	1	actuator upper part
3.3	1	pressure piece
3.4	1	actuator rod
3.5	2	diaphragm disc
3.6	1	diaphragm
3.7	1	indicator cap
3.8	1	adjustment screw
3.12	8/10	socket head cap screw
3.13	8/10	washer
3.14	1	circlip
3.15	1	hexagon nut
3.16	1	O-ring
3.17	1	O-ring
3.18	1	O-ring
3.19	1	O-ring
3.20	1	indicator pin
4	4	washer
5	4	hexagon bolt
7	2	union nut
8	2	union end
9	2	O-ring

